

Coloronix SCC3 Manual

Coloronix, Inc.
5461 West Jefferson Boulevard
Los Angeles, California 90016
(323) 677-4242
<http://www.rgbw.com>

Coloronix, Inc.

© 2011 Coloronix, Inc. All rights reserved.

According to copyright laws, this manual may not be copied—partially, or wholly—without the written consent of Coloronix, Inc.

Despite full effort to avoid any clerical or printing inaccuracies, Coloronix, inc. accepts no responsibility for any such inaccuracies to be found in this manual.

Coloronix, Inc.

5461 West Jefferson Boulevard

Los Angeles, California 90016

Tech Support: (909) RGBW-555

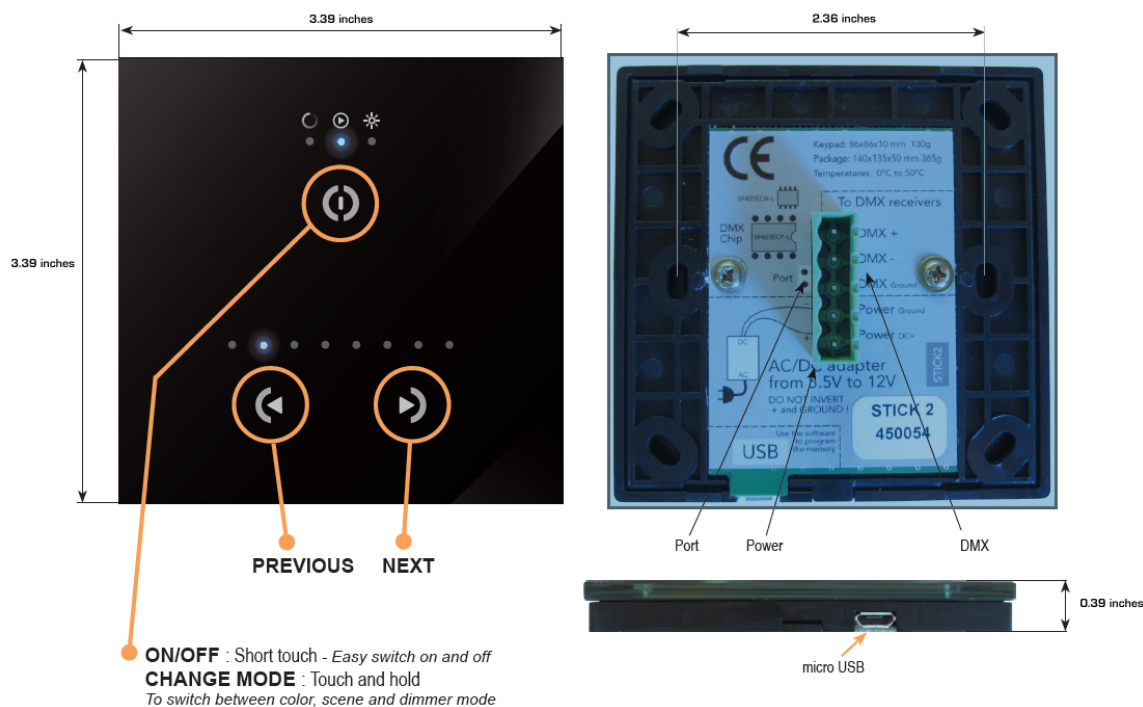
<http://www.rgbw.com>

Coloronix and the Coloronix logo are brands of Coloronix, Inc.

Any non-Coloronix brands or products found in this manual are not endorsed, branded, or recommended for use by Coloronix, Inc.; rather, they are only references for informational purposes. Coloronix has no responsibility for these products in regards to either performance or use.

FEATURES:

- DMX512 Stand Alone Controller with a glass face
- 3 touch sensitive buttons (on/off/mode, previous, next)
- Up to 24 dynamic or static scenes (8 first visualized by a led)
- Live setting of the intensity and color of a scene
- Programmable through the included USB cable and control software
- Compatible with any DMX fixture or DMX LED driver.
- Ready to use (pre-loaded with 8 scenes and 42 RGB fixtures)
- 32-bit ARM technology
- Wall mountable



SPECIFICATIONS	
Package	Controller, cdrom, usb cable, connector block, 120VAC power
PC Requirement	Windows XP/VISTA/SEVEN 32/64 bits and USB 2.0 (MAC OSx soon)
Software	Easy Stand Alone, (ESA2 mac/pc scheduled for September 2011)
Connections	Power (2pins) DMX (3pins) Port (2 pins) Micro-usb
Power	from 5.5V to 18V DC (AC/DC adapter included)
Certifications	EC, EMC, ROHS, ETL, UL (some are in process)
Use	Environment IP20 Temperature 0°C to 50°C

AVAILABLE MEMORY	
CHANNELS	STEPS
8	326
16	192
32	102
48	68
64	50
80	38
96	31
112	25
128	21

EASY INSTALLATION

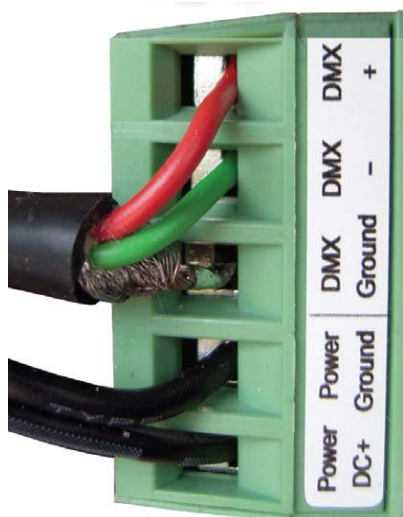
1. Mount a miniature electrical box inside the wall



The SCC3 controller can be installed in a standard compact 2.36 inch electrical backbox.

You can insert the AC/DC adapter inside or outside the backbox.

2. Connect the wires



DMX: Connect the DMX cable to the lighting receivers (Leds, Dimmers, Fixtures..) (For XLR: 1=ground 2=dmx- 3=dmx+)

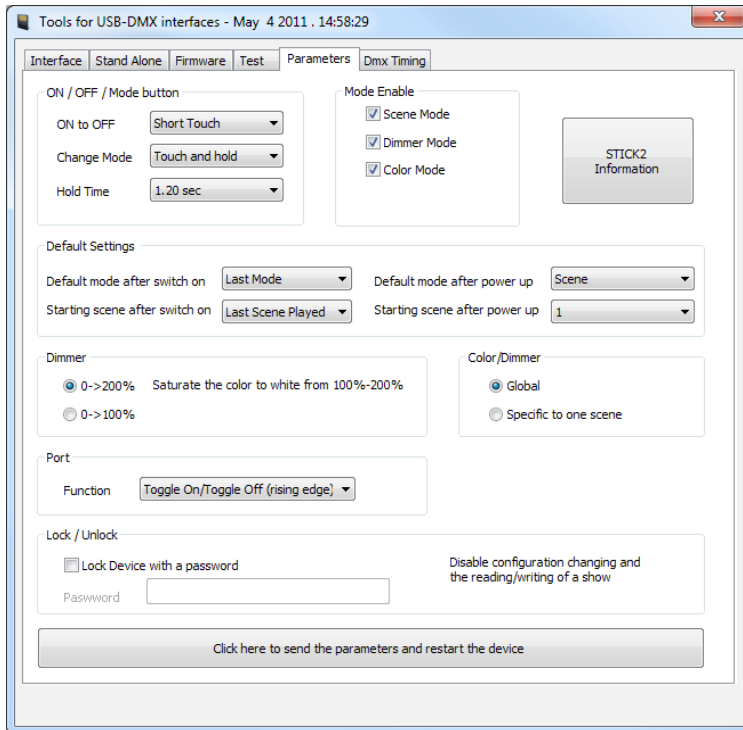
POWER: Connect the AC/DC adapter.
Make sure to not invert the + and the ground.

3. Mount the interface on the wall

First, plug the 2 connectors (green connector block)
Secondly, mount the back side of the interface on the wall with 2 or more screws
Then, close the unit by clipping the front panel onto the back plate

SOFTWARE

1. TOOLS.EXE to set parameters



2. EASY STAND ALONE to program the memory

